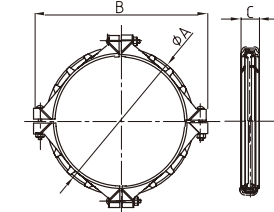
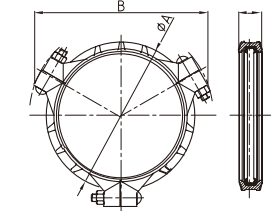
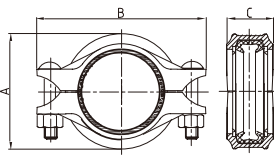


# SJZ Metalsin Tech Co Ltd

## Standard Rigid Coupling



Nominal Size mm/in	Pipe O.D mm/in	Working Pressure PSI/MPa	Max. End Load kN/Lbs	Pipe End Separation mm/in	Dimensions			Bolt Size No.-Size mm	Certificate
					A mm/in	B mm/in	C mm/in		
25 1	33.7 1.327	500 3.45	3.0/680	0-1.6 0-0.06	59 2.33	100 3.94	44 1.74	2-3/8X55 2-M10X57	UL FM VdS LPCB
32 1¼	42.4 1.669	500 3.45	4.8/1080	0-1.6 0-0.06	66 2.60	109.5 4.31	45 1.78	2-3/8X55 2-M10X57	UL FM VdS LPCB
40 1½	48.3 1.900	500 3.45	6.3/1420	0-3.2 0-0.13	72 2.84	115 4.53	45 1.78	2-3/8X55 2-M10X57	UL FM VdS LPCB
50 2	60.3 2.375	500 3.45	9.8/2210	0-3.2 0-0.13	85 3.35	131 5.16	45 1.78	2-3/8X55 2-M10X57	UL FM VdS LPCB
65 2½	73.0 2.875	500 3.45	14.4/3240	0-3.2 0-0.13	98 3.86	145 5.71	45 1.78	2-3/8X55 2-M10X57	UL FM LPCB
65 2½	76.1 3.000	500 3.45	15.7/3520	0-3.2 0-0.13	101 3.98	147 5.78	45 1.77	2-3/8X55 2-M10X57	UL FM VdS LPCB
80 3	88.9 3.500	500 3.45	21.4/4810	0-3.2 0-0.13	115.0 4.53	170 6.69	46 1.82	2-1/2X70 2-M12X70	UL FM VdS LPCB
100 4	108.0 4.250	500 3.45	31.5/7100	0-3.2 0-0.13	140 5.51	197 7.76	52 2.05	2-1/2X70 2-M12X70	UL FM LPCB
100 4	114.3 4.500	500 3.45	35.4/7960	0-3.2 0-0.13	146 5.75	200 7.88	52 2.05	2-1/2X70 2-M12X70	UL FM VdS LPCB
125 5	133 5.250	300 2.07	28.7/6460	0-3.2 0-0.13	165 6.50	232 9.13	52 2.05	2-5/8X85 2-M16X85	UL FM LPCB
125 5	139.7 5.500	500 3.45	52.9/11800	0-3.2 0-0.13	170 6.69	238 9.37	52 2.05	2-5/8X85 2-M16X85	UL FM VdS LPCB
125 5	141.3 5.563	500 3.45	54.1/12100	0-3.2 0-0.13	172 6.77	236.5 9.31	52 2.05	2-5/8X85 2-M16X85	UL FM LPCB
150 6	159.0 6.250	300 2.07	41.0/9240	0-3.2 0-0.13	190 7.48	258 10.16	52 2.05	2-5/8X85 2-M16X85	UL FM LPCB
150 6	165.1 6.500	500 3.45	73.8/16610	0-3.2 0-0.13	198 7.80	266 10.47	52 2.05	2-5/8X85 2-M16X85	UL FM LPCB
150 6	168.3 6.625	500 3.45	76.7/17260	0-3.2 0-0.13	202.0 7.95	270 10.63	52 2.05	2-5/8X85 2-M16X85	UL FM VdS LPCB
200 8	219.1 8.625	450 3.10	116.9/26280	0-3.2 0-0.13	260.0 10.24	346 13.625	62 2.44	2-3/4X115 2-M20X115	UL FM VdS LPCB
250A 10	267.4 10.528	300 2.07	116/26130	0-3.2 0-0.13	318 12.52	396 15.60	63 2.48	2-3/4X120 2-M20X115	UL FM
250 10	273.0 10.750	400 2.8	163.8/36800	0-3.2 0-0.13	327 12.88	420 16.54	63 2.48	2-7/8X125 2-M22X125	UL FM VdS
300A 12	318.5 12.539	300 2.07	164.8/37080	0-3.2 0-0.13	364 14.33	456 17.95	63 2.48	2-7/8X140 2-M22X140	UL FM
300 12	323.9 12.750	400 2.8	230.6/51880	0-3.2 0-0.13	378 14.88	466 18.35	63 2.48	2-7/8X140 2-M22X140	UL FM
350 14	355.6 14.000	300 2.07	205.5/46220	0-3.2 0-0.13	415 16.34	510 20.08	72 2.84	3-7/8X140 3-M22X140	UL FM
400 16	406.4 16.000	300 2.07	268.4/60370	0-3.2 0-0.13	468 18.43	575 22.64	72 2.84	3-7/8X140 3-M22X140	UL FM
450 18	457.2 18.000	225 1.6	262.5/59060	0-3.2 0-0.13	508 20	608 23.94	78 3.07	3-7/8X140 3-M22X140	—
500 20	508.0 20.0	225 1.6	324.1/72910	0-3.2 0-0.13	563 22.17	660 25.98	78 3.07	4-7/8X140 4-M22X140	—
600 24	609.6 24.000	225 1.6	466.7/104990	0-3.2 0-0.13	668 26.30	772 30.40	78 3.07	4-1X140	—